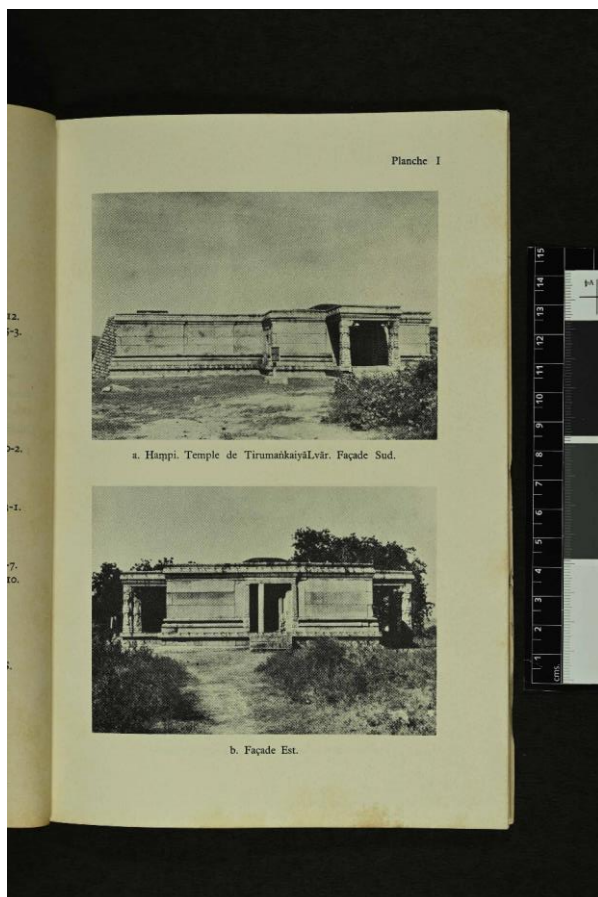
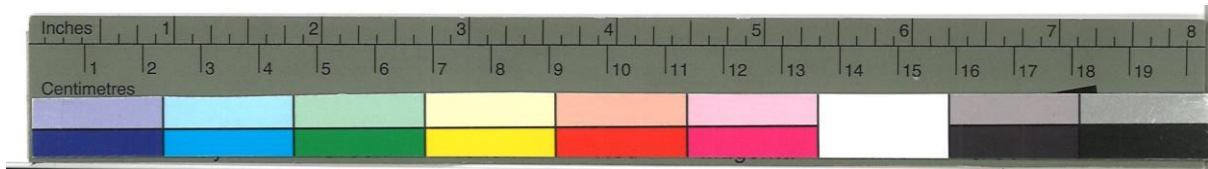
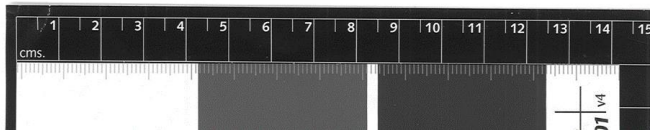
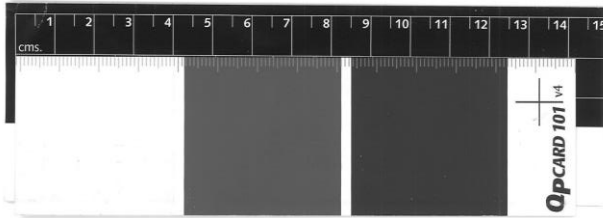
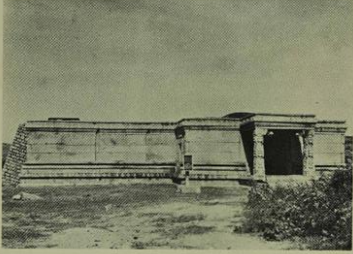


Placement of the colour-checker

Sometimes, the ruler, greyscale and colour-checker dominates the frame. You can cut the checker so that it takes up less space and then place it along the edge of the frame as shown below.





a. Harppi. Temple de Tirumankaiyálvár. Façade Sud.



b. Façade Est.

EAP would like to thank the [EAP1549](#) team for providing these images.